

19 Series



Timing Mechanism

TIMING MECHANISM

The MARKTIME® 19 Series Spring Driven Timing Mechanism is a versatile timing device that generates “action” via a trip lever that “snaps” with an 8 ounce force at the end of the time cycle. Engineered for simple operation and easy installation. A wide range of timings are available as well as the versatility found only in mechanical devices constructed by skilled technicians, with the highest quality materials.

APPLICATIONS

The MARKTIME® 19 Series Timing Mechanism is engineered to be highly versatile for easy adaptation to any application where a positive “snap” action is required to activate apparatus.

Typical applications include turning on/off valves, operating portable conveyor systems, releasing parachutes, overriding thermostats, activating switches, to name a few.

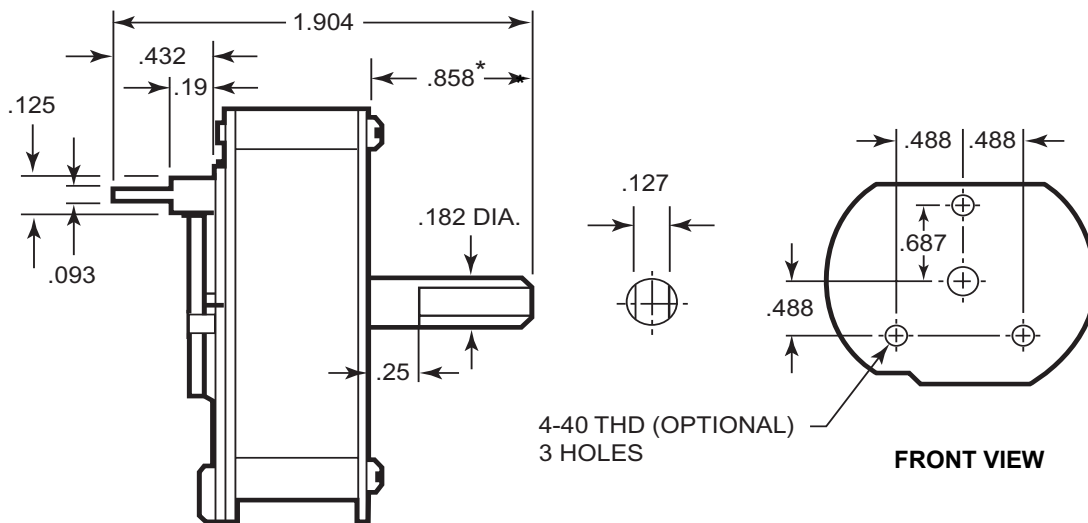
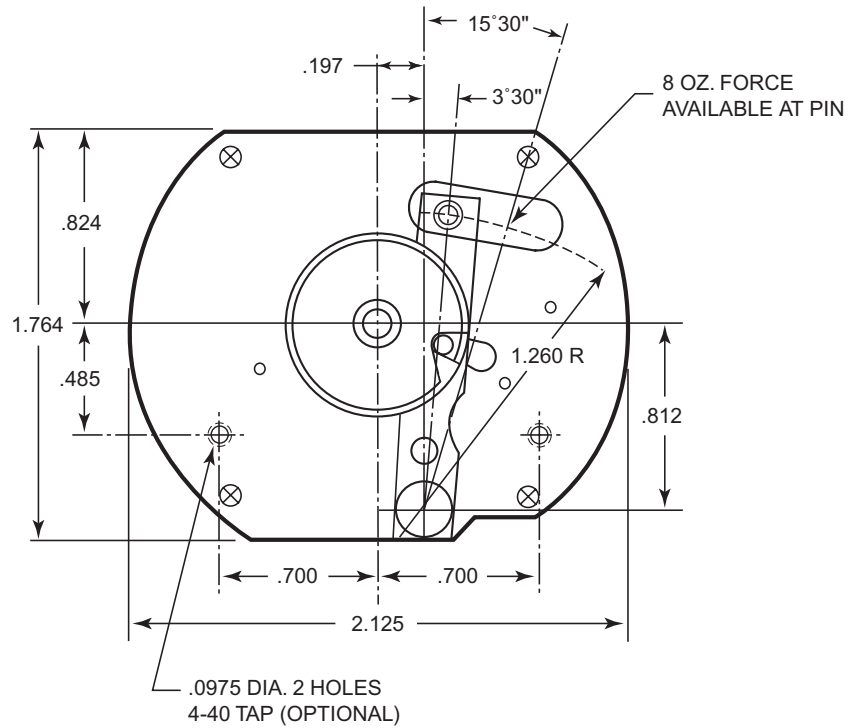
FEATURES

- Trip lever “snap action” across 1/2 inch arc
- Timing ranges available from seconds to 12 hours with + 10% accuracy - increased accuracies available
- 8 ounce force of trip levers with lesser and greater force available
- 2 or 3 screw mounting options available
- Unbreakable “mainspring” operation requires no external power to operate
- Can be built to withstand general military specifications with respect to temperature, moisture, vibration and shock
- Simple operation
- One year limited warranty

BENEFITS

- Easy installation, no external energy consumption required, and competitive price result in the most cost effective control available
- Available in widest range of timings from seconds to 12 hours; while also being adaptable to force, dimensions, and environmental requirements
- MARKTIME® mechanical time controls are made in the U.S. and have been used in thousands of demanding applications
- For over 70+ years, M.H. Rhodes has supported all MARKTIME® timing devices with “applications oriented” technical support. We pride ourselves in working with customers to solve their time problems . . . no matter how difficult!

SPECIFICATIONS



*** OTHER LENGTHS AVAILABLE**