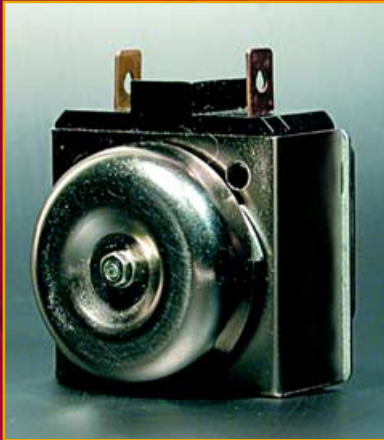
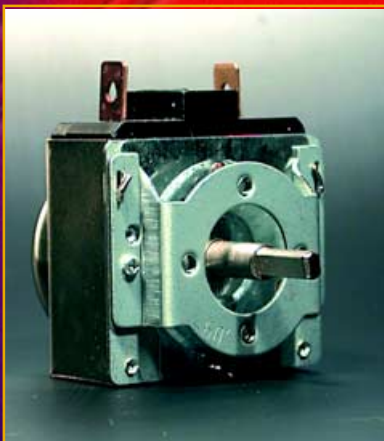


24 Series



Panel Mount Bell Switch



Panel Mount Switch

PANEL MOUNT TIME SWITCHES

The MARKTIME® 24 Series line of mechanical interval time switches is a reliable and accurate time control for automatically turning a circuit “off” or “on” at the end of a pre-set time period. The 24 Series is engineered for dependable operation in most applications. The 24 Series provides a cost-effective time switch solution for demanding timing requirements.

STANDARD FEATURES

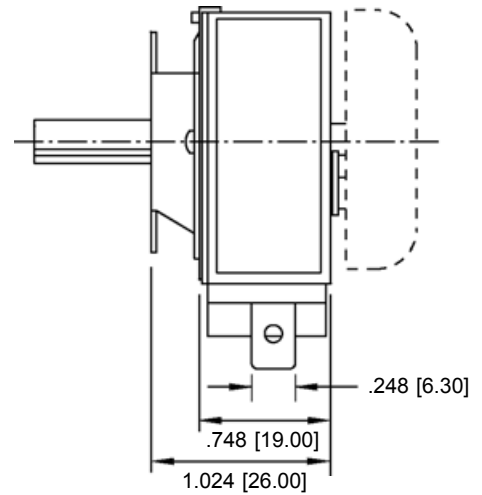
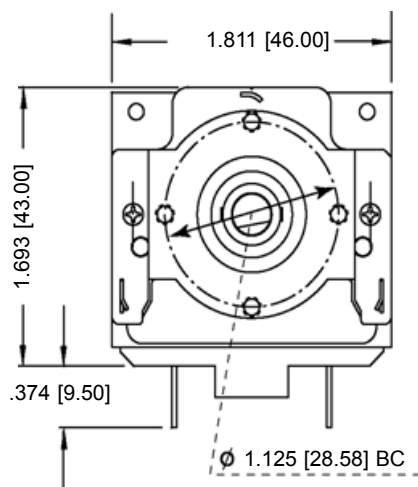
- Exclusive high temperature design
- Proven, heavy duty mechanical construction
- Easy to use rotary knob
- Compact, space-saving design
- Timing ranges available from 5 minutes to 3 hours, all with +10% accuracy
- SPST switching configurations
- Handles line current to 20 AMPs
- Front “center stud” or “two screw” mounting options
- .250” tab terminals from side
- 310° knob wind; other degree of wind options available
- Standard shaft sizes: .182”, .236” and .250” dia.
- UL and ULC recognized

OPTIONAL FEATURES

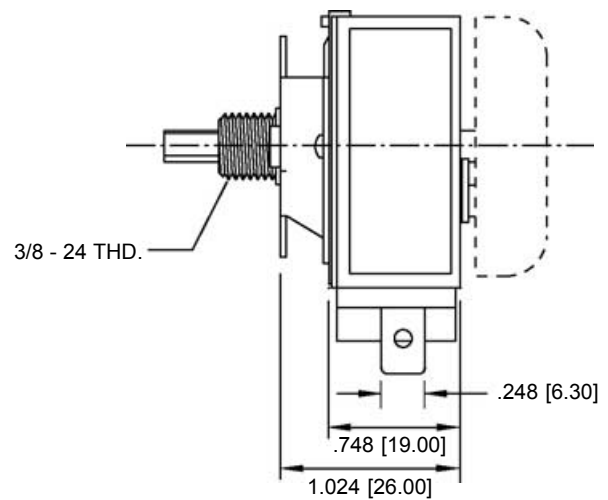
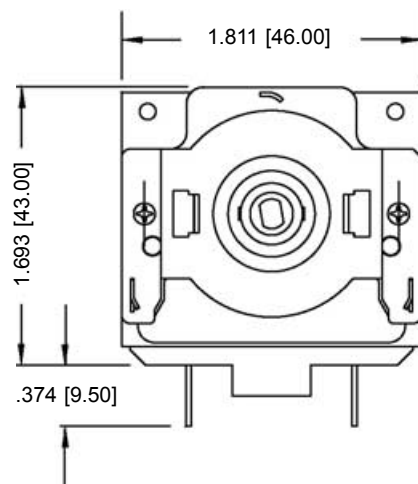
- Manual override “hold”
- Available with and without bell
- As with all MARKTIME® products, complete engineering support is readily available to assist you to select a 24 Series time switch to meet a specific application

DIMENSIONS

Switch (shown with Two Screw Mount)



Bell Switch (shown with Center Stud Mount)

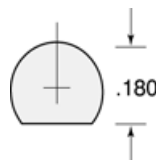


AVAILABLE SHAFTS

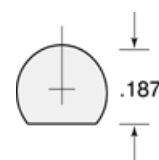
Three standard shaft diameters are available:



.182" dia.
with double
"flat" on the
vertical axis

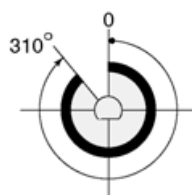


.236" dia.
with single
"flat" on the
horizontal axis



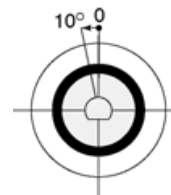
.250" dia.
with single
"flat" on the
horizontal axis

WINDING ANGLE



310° wind
clockwise
from zero

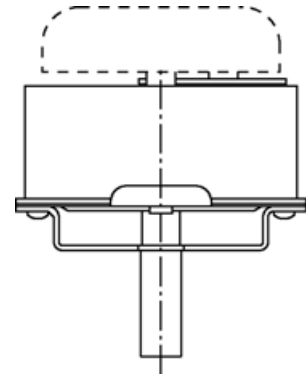
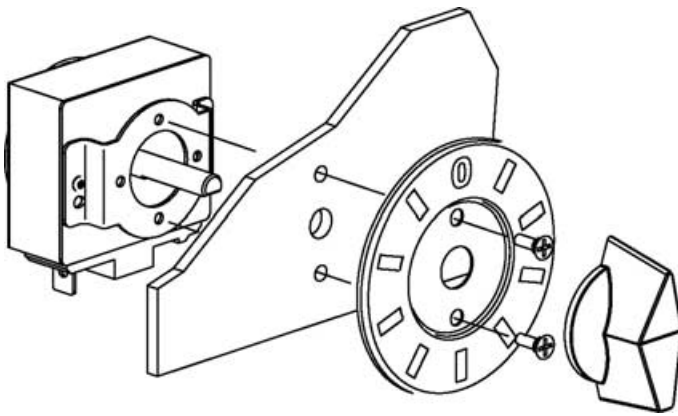
HOLD OPTION



10° wind
counter-clockwise
from zero

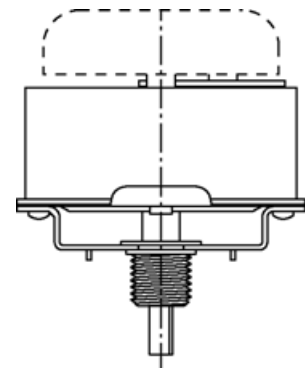
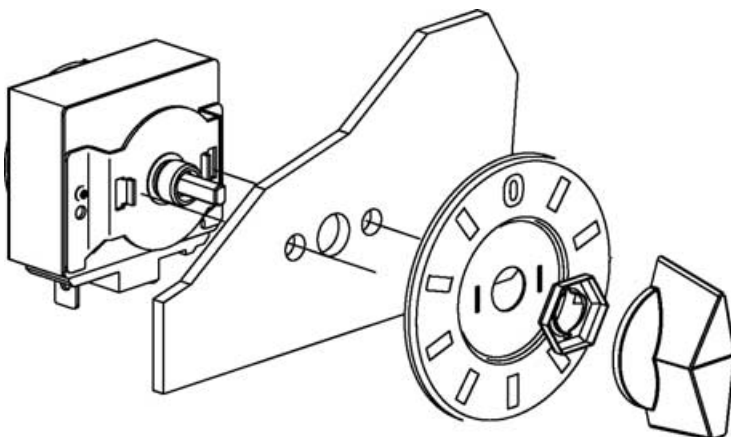
MOUNTING CONFIGURATIONS

Two Screw with .182, .236 and .250 shaft



- For use with two #5 flat head screws
- Mounting hardware is not included

Center Stud with .182, .236 and .250 shaft



- Uses threading 3/8-32 nut
- Nut assemblies face down
- Mounting hardware is not included

TIMER CONFIGURATION MATRIX

Timing Cycle in Min.	Degree of Wind	Special Feature	Special Feature	Mounting Style	Arbor Detail	Flat Orientation	Dia.	Across Flats	Extension From Bracket	Amperage & Contact Position
05	M = 270°	H = Hold	B = Bell	C = 2 Screw	-01	Parallel to Terms	.183	.129	.665	B = 20 Amp NO
15	N = 310°			CS = CTR Stud	-02	Perpendicular Facing Terms	.252	.189	.665	D = 20 Amp NC
30					-03	Perpendicular Facing Terms	.248	.185	.665	
60							.236	.181	.665	
120							.234	.178	.665	
180										

NOTES:

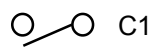
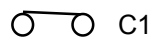
1. P/N positions for Special Features are left blank as shown for the Hold option in the example to the right.
2. NO and NC indicate Normally Open or Normally Closed switch contacts before winding timer.

Ex. P/N 2415NBCS-01B = 15 Minute, 310°, No Hold, Bell, Center Stud, .182 Shaft Dia., 20 Amp. NO

SWITCH RATINGS AND CONFIGURATIONS

RATINGS			
6 amp	250 VAC	1/4 hp	125-250 VAC
15 amp	250 VAC	1/2 hp	125-250 VAC
20 amp	277 VAC	1 hp	125 VAC
		2 hp	250 VAC

SWITCHING CONFIGURATIONS	
SPST NO	SPST NC

SWITCH TYPE	SCH. SYMBOL
SPST NO	NO 2  C1
SPST NC	NC 3  C1



ADDITIONAL INFORMATION

With 70 years of experience supplying applications-oriented engineering products M.H. Rhodes stands ready to work to meet your engineering requirements.

For details on the above, contact your local MARKTIME® representative, or our applications engineer at the factory.