








637 Series Electromechanical Sealed Quartz AC Hour Meters

-  90-264 VAC Operating voltage, 50 to 60Hz
-  Superior Quartz accuracy
-  Tamper resistant
-  100% Sealed, waterproof
-  6 Figure display: 99999.9
-  Round or rectangle bezel mounting
-  UL/cUL, CE & RoHS Compliant



Rectangle Bezel
Model #637-01



Round Bezel
Model #637-04

Applications:



CNC Machine Tools



Waste Water Treatment



Boarding Bridge



Control Panels

637 Series Electromechanical Sealed Quartz AC Hour Meters

Description

M.H. Rhodes/Cramer Company offers the most accurate and long-term time keeping sealed Quartz AC Hour Meters available. This AC quartz Hour Meter has an operating range of 90-264 VAC, 50/60Hz. Models are available in the standard industry 2 screw or clip rectangular and 3 screw round mounting options. The 100% sealed case protects against tampering and environmental elements, providing years of reliable service. All models are NEMA 4X, 12 rated when mounted with optional gasket.

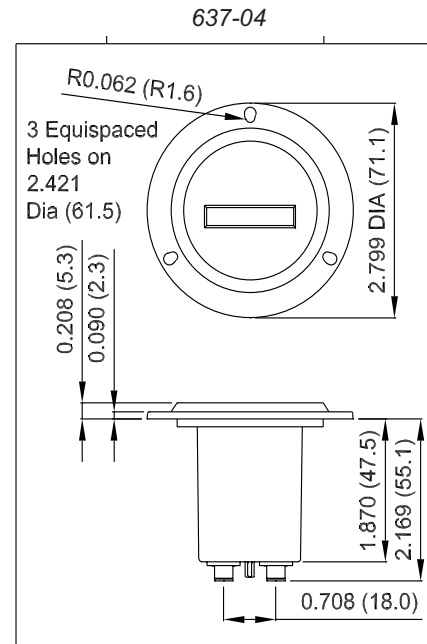
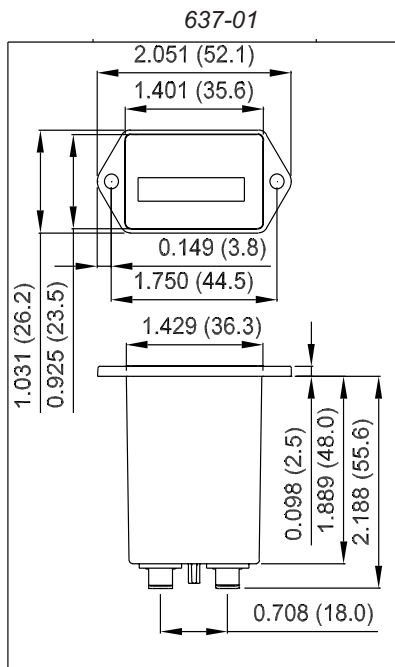
Dimensions



Model #637-01



Model #637-04



Specifications

Model	637-01	637-04
Display	6 Figure; 99999.9	
Reset	Non-reset	
Accuracy	± 0.02% over entire range	
Power Input	1 watt max	
Voltage	90-264 VAC	
Frequency	50/60 Hz VAC	
Operating Temperature Range	-40°F to 185°F (-40°C to 85°C)	
Terminals	1/4" (6.3 mm) spade terminals	
Vibration	10-80 Hz, 20g max. (SAE J1378)	
Shock	55g @ 9 - 13 msec (SAE J1378)	
Standard Mounting	2 hole or clip	3 hole
Agency Approval	UL, CE and RoHS Compliant	

Options

- ☞ Wire leads
- ☞ Gasket kit (for NEMA 4X, 12 rating)
- ☞ Custom lens
- ☞ Terminal placement: up, down, straight

www.mhrhodes-cramer.com



M.H. Rhodes/Cramer Company
 105 Nutmeg Road South • South Windsor, CT 06074 USA
 Toll Free: 877.684.6464 • PH: 860.291.8402 • FX: 860.620.0897